

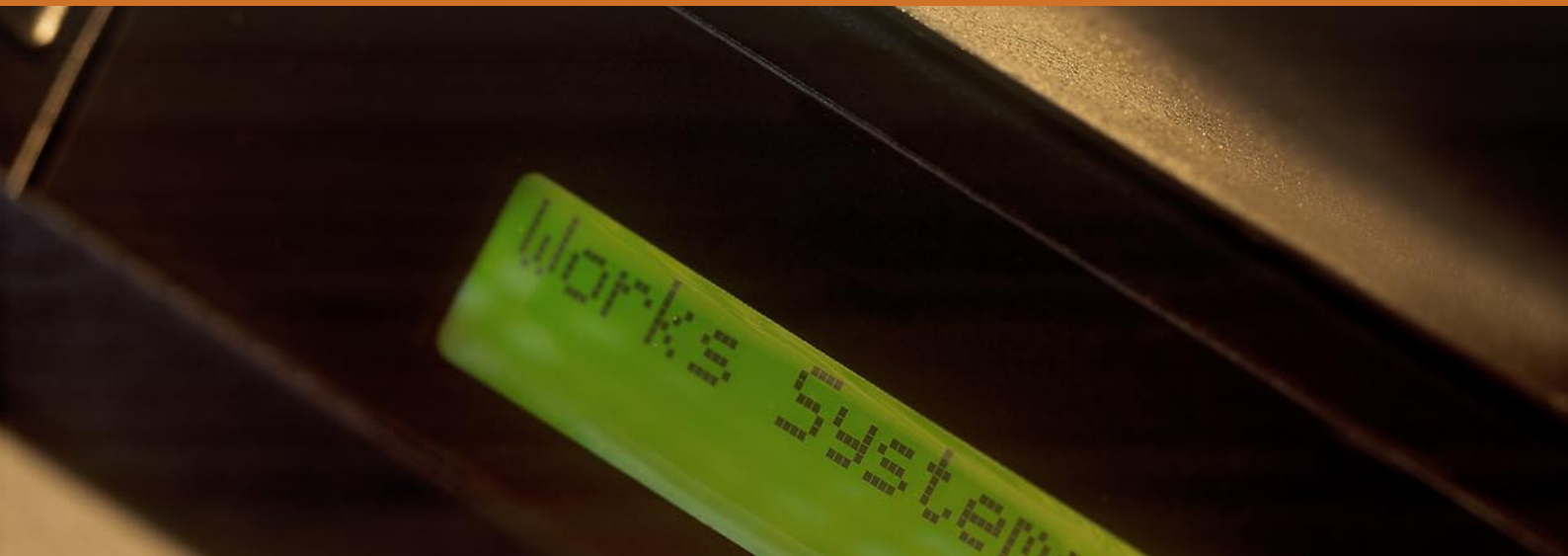


WORKS SYSTEMS

ONE M S

ONE NETWORK MANAGEMENT SYSTEM





OneMS is a flexible unified network management solution designed for the Telco and Service Providers industries. It leverages the existing network infrastructure and operational support systems to automate and integrate the business processes of ordering, provisioning, configuration and management of internet network devices (CPE, IAD, ATA etc.) and services.

Highly Scalable

The OneMS scales from an entry-level of 50,000 to millions of manageable devices. In the entry-level version, OneMS is a stand-alone networking appliance. This platform scales utilizing ATCA rack blade technology to provide communications capacity and redundancy.

OneMS contingency features:

- Redundancy
- Failover (hot-standby system)
- Load-balancing

Customizing to suit your needs

OneMS is a carrier-class solution that incorporates cost effective modular architecture allowing service providers to customize a specific solution that best meets the needs of their business today and expand to include new services and subscriber growth in the future.

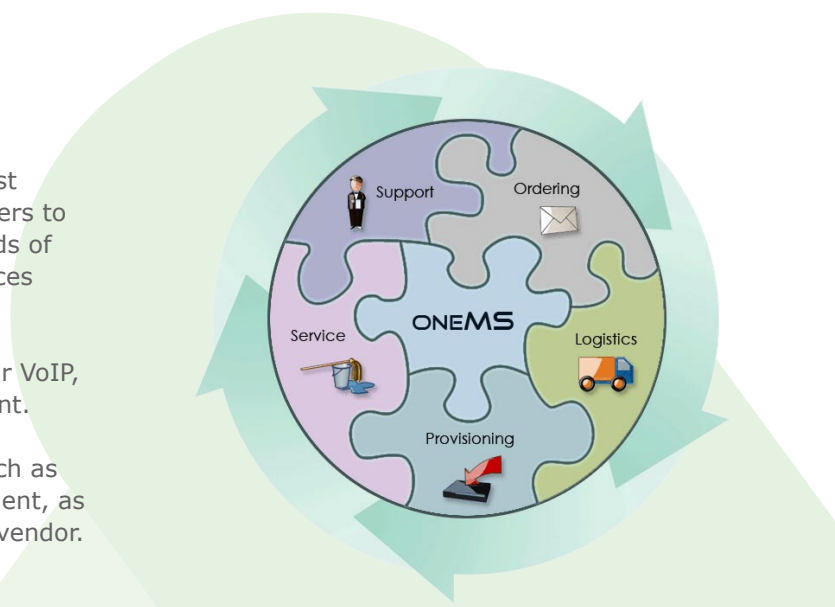
Management Modules for OneMS includes solutions for VoIP, WLAN, Service Management and Support Management.

The OneMS system uses standard based protocols such as TR069 and TR104 for device provisioning & management, as well as proprietary protocols depending on hardware vendor.

Fully Integrated Solution

The OneMS provides methods for integration into the service providers' Operational Support systems, in order to seamlessly integrate end-to-end all of the related business processes

- Ordering Process
- Logistic Process
- Provisioning Process
- Service Process
- Support Process

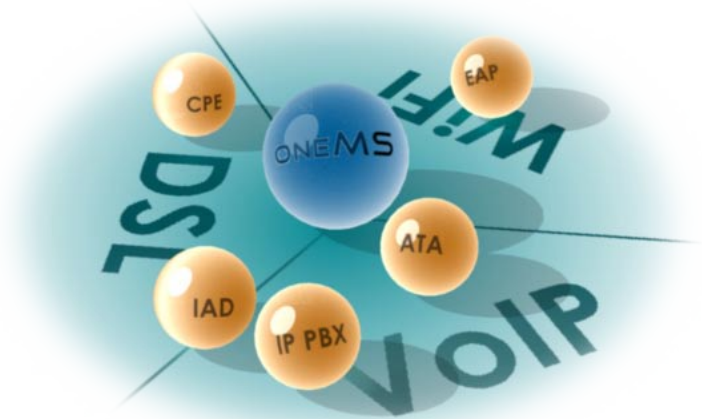


Device Interoperability and testing

Works Systems provide an extensive interoperability test program to ensure device compatibility prior to deployment. This allows the OneMS Management platform to interoperate with most of the major CPE hardware vendor devices.

Advanced Capabilities

Within the framework of the OneMS ACS solution is HDC (Hybrid Device Communications) Technology to support a multitude of management protocols. In addition to the TR-069 and TR-104 enabled devices, OneMS can accommodate a wide range of hardware vendor proprietary management protocols to provide a seamless integrated single point of management for multi-vendor Network equipment, Wireless and Voice over IP devices.



Key Management Features

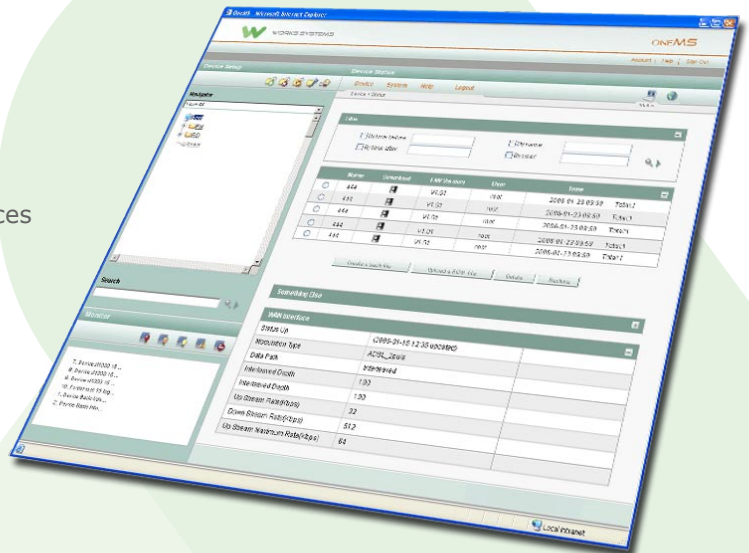
OneMS is designed to cover all major operations in the management of customer devices, either directly in the OneMS user interface - or through the integration points from other Operating Support Systems (OSS).

The OneMS features essential management functions, such as

- Auto-provisioning
- Maintain & Service customer devices
- Backup
- Configuration change (Service-Upgrade)
- Firmware Roll-out
- Troubleshooting
- Minimize Down-Time
- Alarms & Logs
- Single-point of management for all customer devices
- Bulk reporting on device uptime & traffic usage

OneMS Solution Key Business Benefits

- Reduce support costs
- Reduce service provisioning costs
- Best subscriber experience – plug & play
- Reduce device lifecycle support costs
- Improve the subscriber support experience
- Reduce time-to-market of new services
- Maximize service adoption rates
- Drive new revenue streams – Triple Play
- Reduce Customer Churn (avoid losing customers)



UNITED STATES

Works Systems, Inc.
7291 Coronado Drive, Suite 2
San Jose, California 95129
USA
Email: us.sales@workssys.com
Phone: +1 408-777-2967

CHINA (Sales Office)

Works Systems Co, Ltd
Room 1503, 15th.fl. Canway Building,
66 Nanlishi Road, Xicheng District
Beijing, 100045PR.
China
Email: cn.sales@workssys.com
Phone: +86-10-6808-6803

DENMARK

Works Systems Europe A/S
Hvilevej 18
2900 Hellerup, Copenhagen
Denmark
Email: eu.sales@workssys.com
Phone: +45 3314 4723

TAIWAN

Works Systems, Inc.Taiwan Branch
12F-4 141 Sec.1 Keelung Rd.
Taipei 110
Taiwan, R.O.C.
Email: tw.sales@workssys.com
Phone: +886-2-2528-4818 ext 2600
+886-2-25284820 (FAX)

UNITED KINGDOM

Works Systems UK
High Street, Ascot
Berkshire SL5 7HP
United Kingdom
Email: eu.sales@workssys.com
Phone: +44 (0) 870 4711 287

JAPAN

Works Systems Japan Co., Ltd
Nakanishi Bldg. 1102, 11F
5-29-11 Sendagaya Shibuya-ku
Tokyo
Japan
Email: jp.sales@workssys.com
Phone: +81-(0)3-6457-7781
+81-(0)3-6457-7782 (FAX)

CHINA R&D Center

Works Systems Co, Ltd
Room 1702 Section A, Xin Mao Tian Cai Building
No. 1, Rong Yuan Road, Hua Yuan Industrial Park
Tianjin, 300384
P.R. China
Email: cn.sales@workssys.com
Phone: +86-22-5839-7112
+86-22-8371-9375 (FAX)

www.workssys.com**Copyright Statement**

All of the information seen in these pages belongs exclusively to Works Systems, Inc.
Any distribution to the third parties without prior notice to Works Systems, Inc. is prohibited.